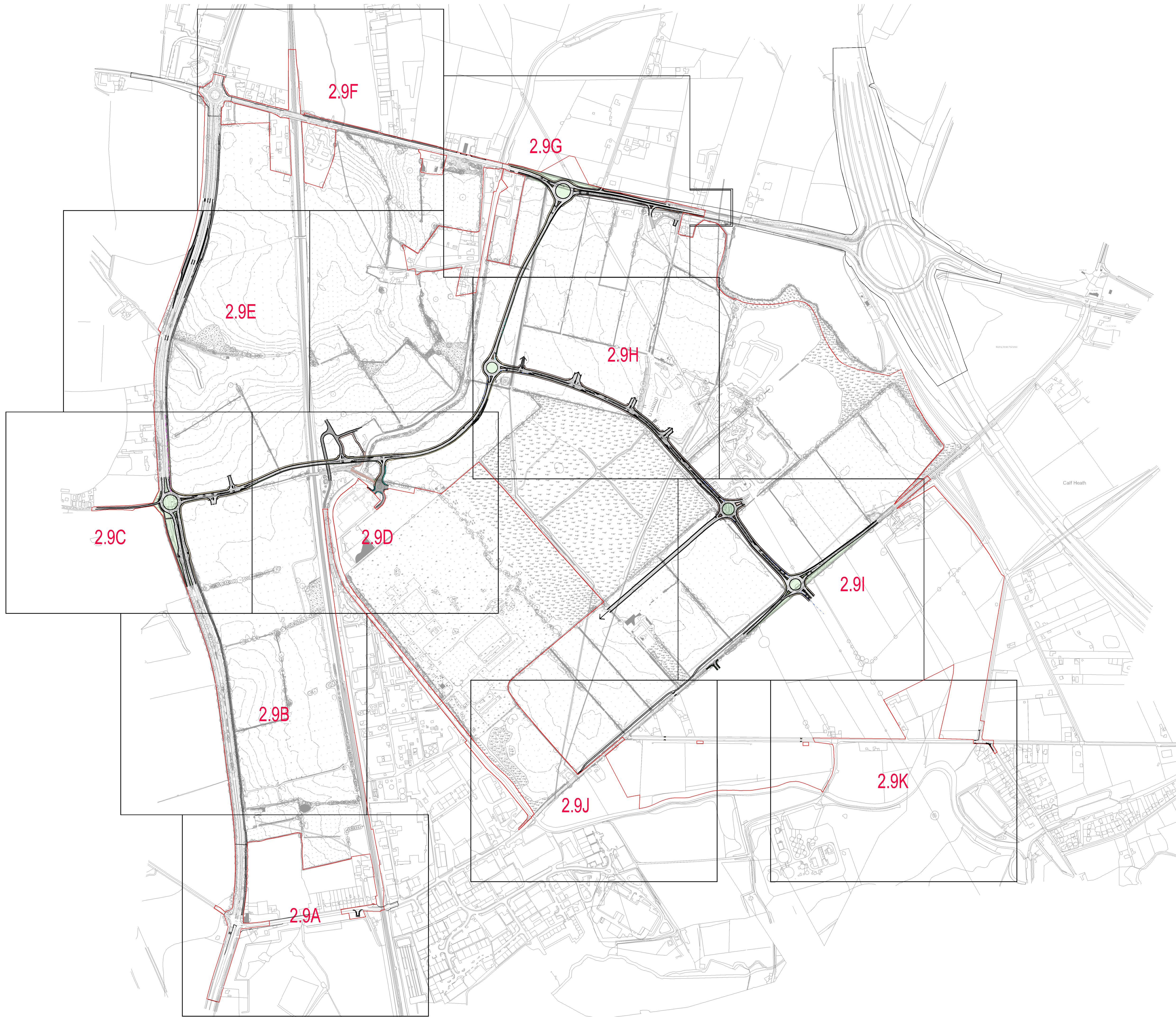
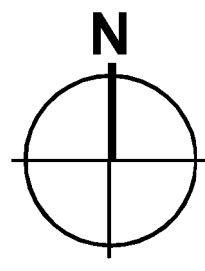



# APPENDIX E: GENERAL ARRANGEMENT DRAWINGS

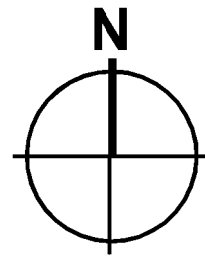




- I - 05/06/2018 - RED LINE UPDATED
- H - 08/05/2018 - MINOR AMENDMENTS
- G - 22/03/2018 - MINOR AMENDMENTS
- F - 02/03/2018 - RED LINE UPDATED
- E - 01/12/2017 - MINOR AMENDMENTS
- D - 10/11/2017 - VICARAGE ROAD ACCESS UPDATED
- C - 01/11/2017 - A5 CENTRAL RESERVATION ADDED
- B - 24/10/2017 - BUS STOPS AMENDED
- A - FIRST ISSUE

Revisions			
 <b>West Midlands Interchange</b>			
Project			
THE WEST MIDLANDS RAIL FREIGHT INTERCHANGE ORDER 201X			
Drawing Status			
SUBMISSION			
Drawing Title		Drawing Size A1	
GENERAL ARRANGEMENT KEY PLAN / HIGHWAY MASTERPLAN			
Regulation		Document	
5 (2) (o)		2.9	
Drawn NW	Date JUNE 2018	Scale 1: 5000	Reviewed JF
Drawing No.			Rev.
WSP-70001979-GA-100			I





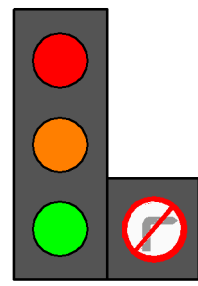
FOR CONTINUATION, SEE DOCUMENT 2.9B

ROUTE DEVIATION TO ACCOMMODATE EXISTING SERVICES

FOOTWAY / CYCLEWAY AND VERGE TO TIE BACK INTO EXISTING





TURNING PROVISION FOR HGVs

NO RIGHT TURN ON PRIMARY AND SECONDARY SIGNAL HEADS

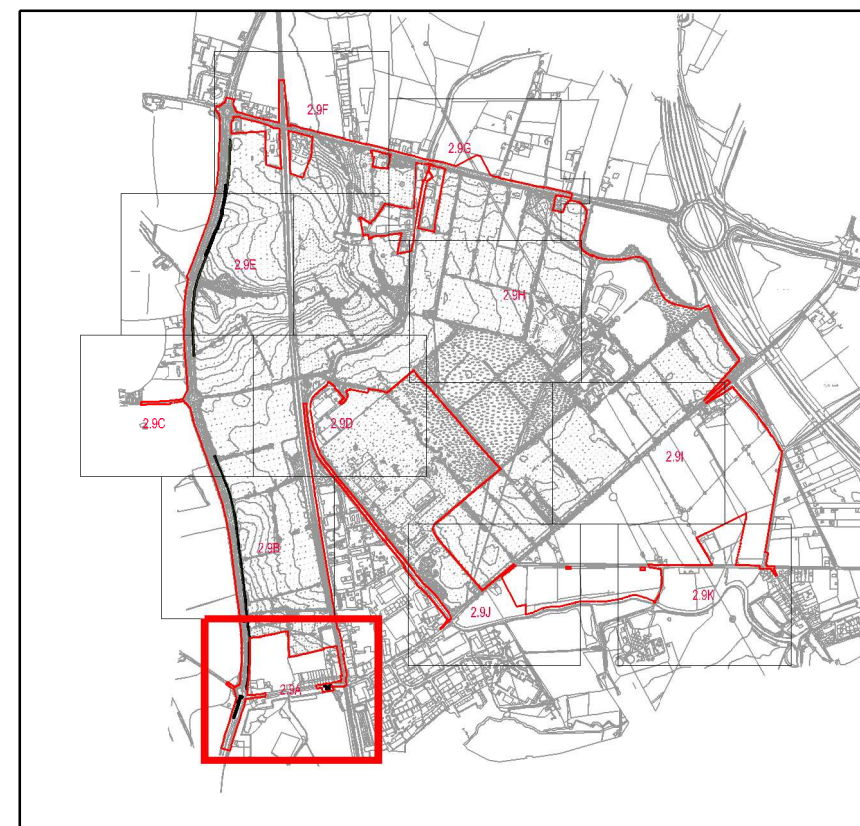


CLOSURE OF EXISTING RIGHT TURN LANE

KEY

-  ORDER LIMITS
-  ROAD AND HGV TURNING AREA
-  FOOTWAY / CYCLEWAY
-  VERGE / GRASS

NOTE: LIMITS OF DEVIATION SHOWN ON THE WORKS PLANS (DOCUMENT SERIES 2.2) AND SET OUT IN ARTICLE 4 OF THE DEVELOPMENT CONSENT ORDER.



- E - 05/06/2018 - RED LINE UPDATED
- D - 08/05/2018 - MINOR AMENDMENTS
- C - 20/03/2018 - MINOR AMENDMENTS
- B - 02/03/2018 - RED LINE UPDATED
- A - FIRST ISSUE



Project  
THE WEST MIDLANDS RAIL FREIGHT  
INTERCHANGE ORDER 201X

Drawing Status  
SUBMISSION

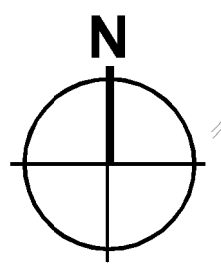
Drawing Title Drawing Size A1  
GENERAL ARRANGEMENT PLAN  
101

Regulation Document  
5 (2) (o) 2.9A

Drawn NW Date JUNE 2018 Scale 1:1000 Reviewed JF

Drawing No. Rev.  
WSP-70001979-GA-101 E





FOR CONTINUATION, SEE DOCUMENT 2.9C

AA19 STAFFORD ROAD

EXISTING FIELD ACCESS CLOSED

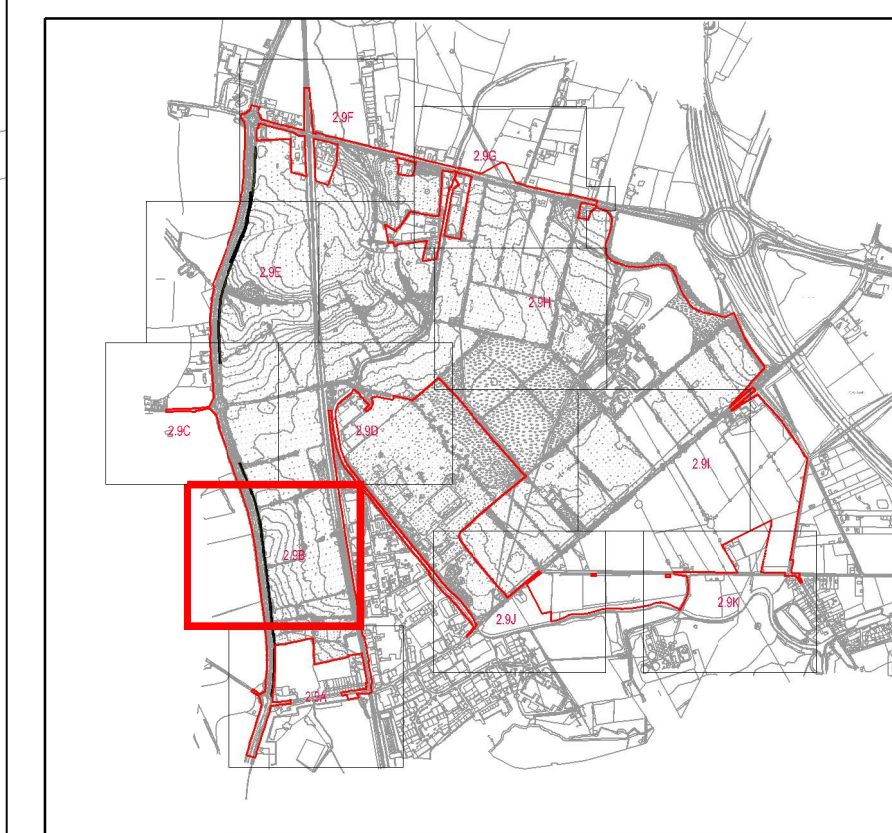
EXISTING ACCESS CLOSED

FOR CONTINUATION, SEE DOCUMENT 2.9A

**KEY**

- ORDER LIMITS
- FOOTWAY / CYCLEWAY
- VERGE / GRASS

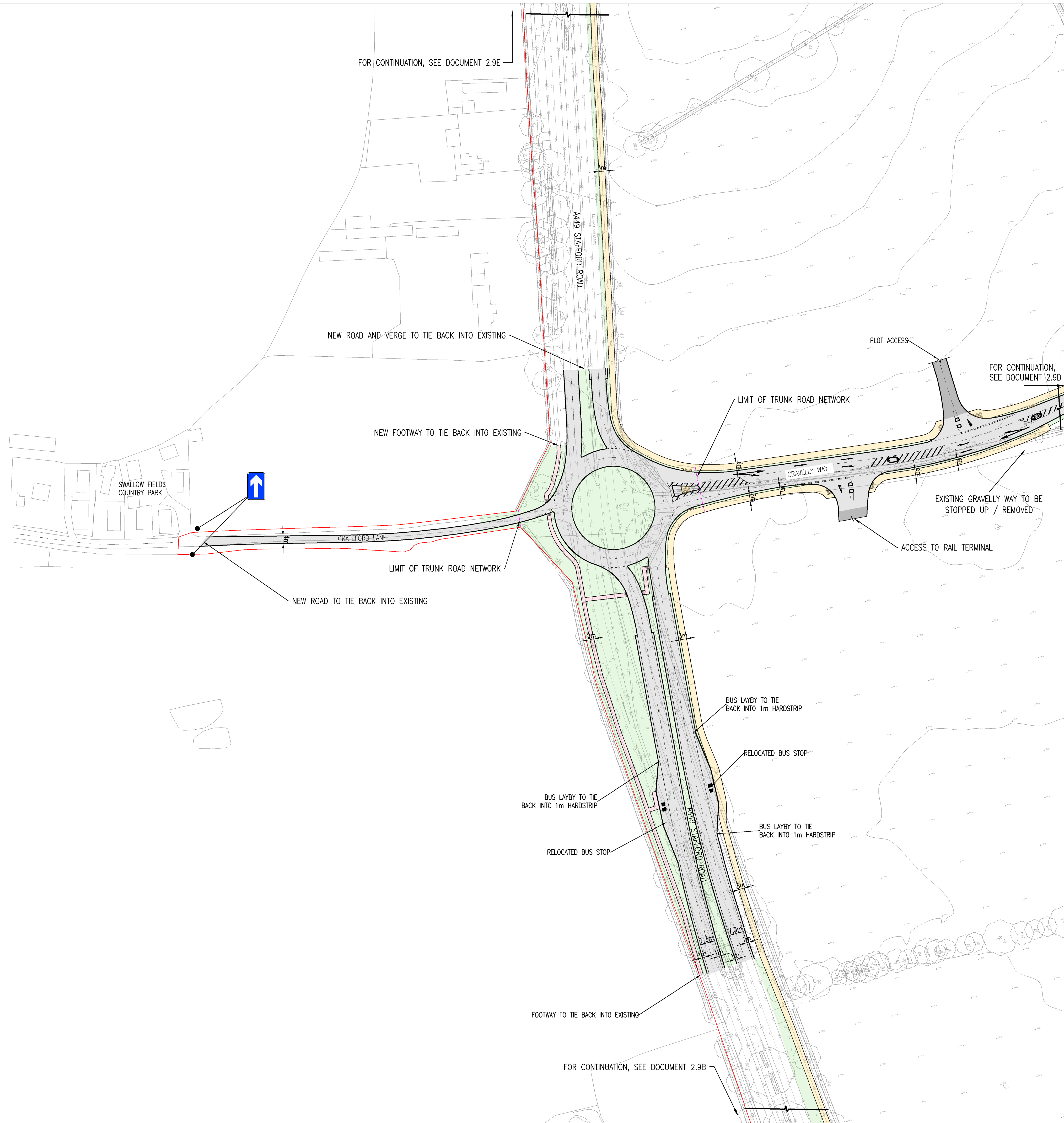
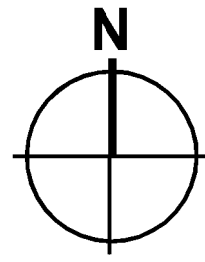
NOTE: LIMITS OF DEVIATION SHOWN ON THE WORKS PLANS (DOCUMENT SERIES 2.2) AND SET OUT IN ARTICLE 4 OF THE DEVELOPMENT CONSENT ORDER.



E - 05/06/2018 - RED LINE UPDATED  
 D - 08/05/2018 - MINOR AMENDMENTS  
 C - 20/03/2018 - MINOR AMENDMENTS  
 B - 02/03/2018 - RED LINE UPDATED  
 A - FIRST ISSUE

Project <b>THE WEST MIDLANDS RAIL FREIGHT INTERCHANGE ORDER 201X</b>	
Drawing Status <b>SUBMISSION</b>	
Drawing Title <span style="float: right;">Drawing Size A1</span> <b>GENERAL ARRANGEMENT PLAN 102</b>	
Regulation <b>5 (2) (o)</b>	Document <b>2.9B</b>
Drawn NW Date: JUNE 2018	Scale: 1:1000
Reviewed JF	Rev. <b>E</b>
Drawing No. <b>WSP-70001979-GA-102</b>	

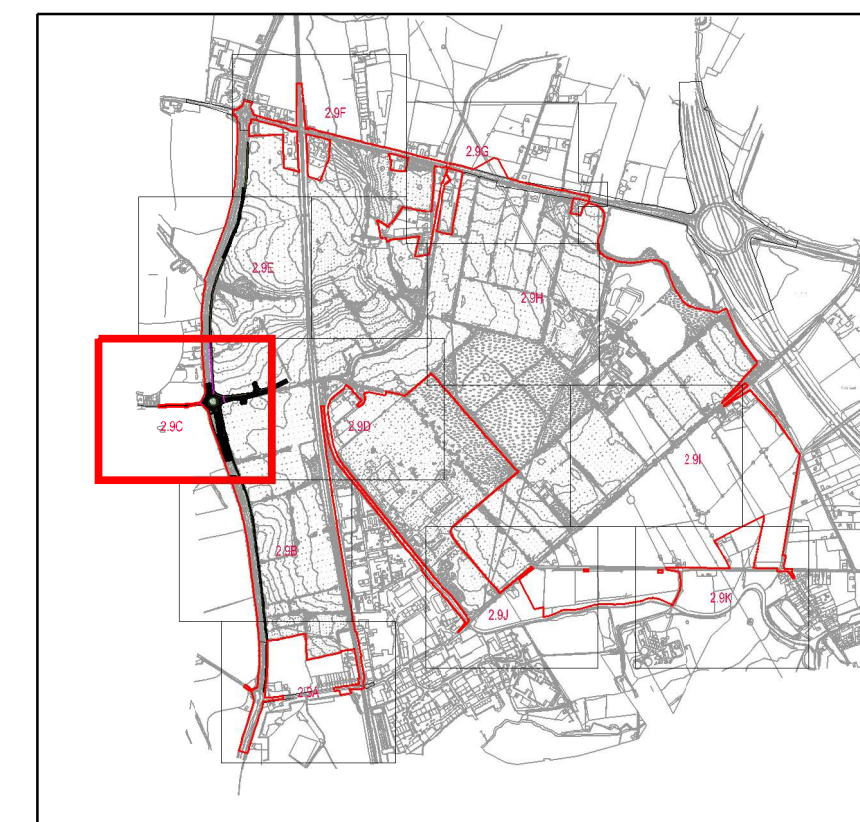




**KEY**

- ORDER LIMITS
- FOOTWAY
- FOOTWAY / CYCLEWAY
- ROAD
- VERGE / GRASS
- UNADOPTED HIGHWAY
- TACTILE PAVING

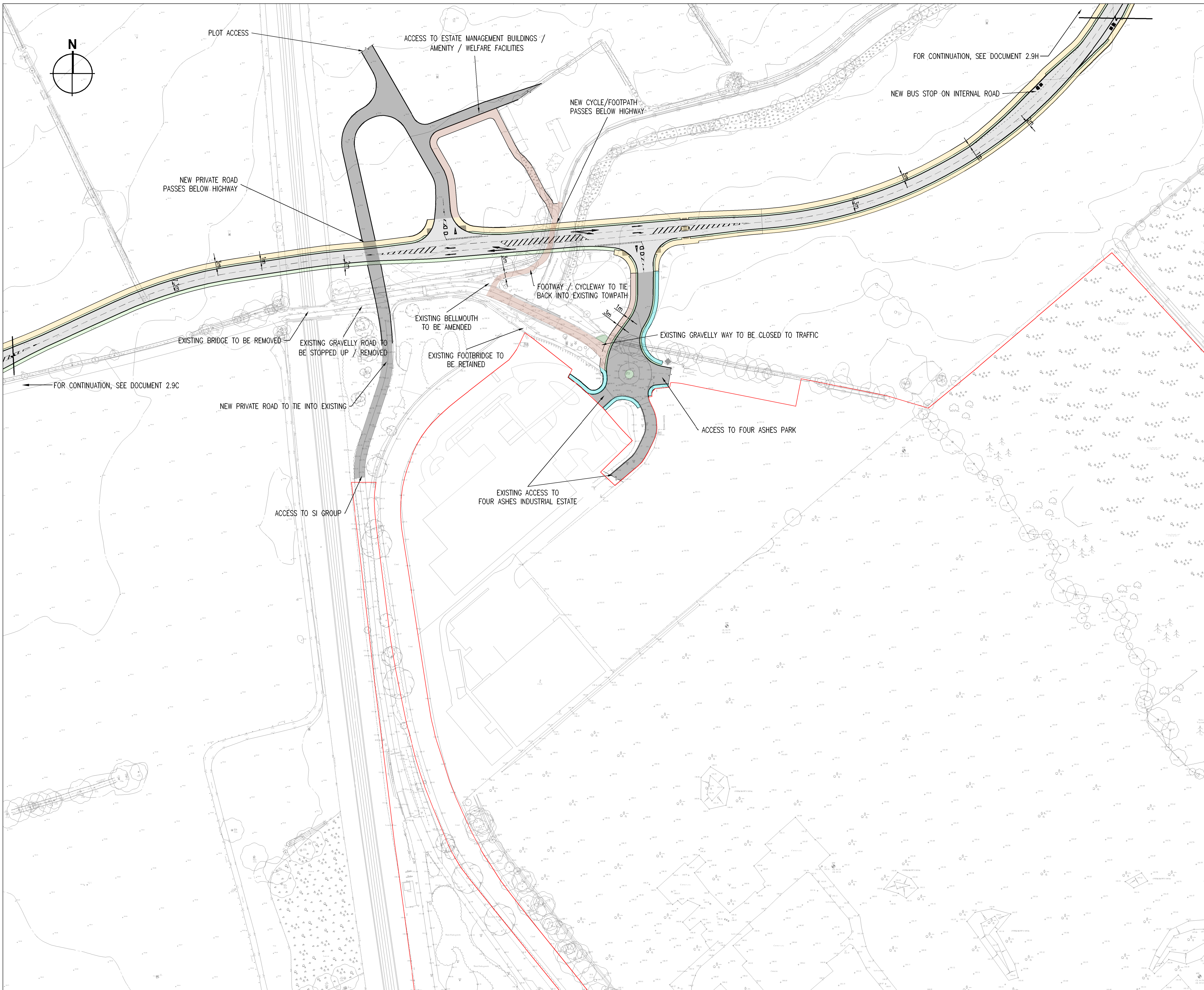
NOTE: LIMITS OF DEVIATION SHOWN ON THE WORKS PLANS (DOCUMENT SERIES 2.2) AND SET OUT IN ARTICLE 4 OF THE DEVELOPMENT CONSENT ORDER.



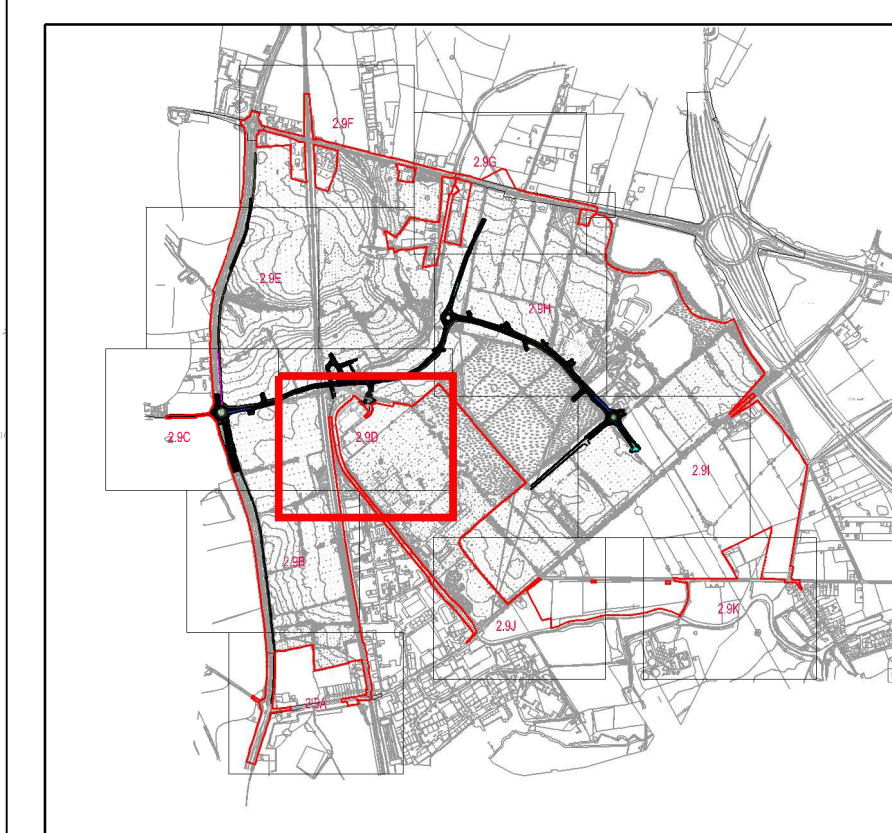
F - 05/06/2018 - RED LINE UPDATED  
 E - 08/05/2018 - MINOR AMENDMENTS  
 D - 20/03/2018 - MINOR AMENDMENTS  
 C - 02/03/2018 - RED LINE UPDATED  
 B - 06/12/2017 - STAGGER REVERSED ON ISLAND  
 A - FIRST ISSUE

Drawing Status <b>SUBMISSION</b>	
Drawing Title Drawing Size A1 <b>GENERAL ARRANGEMENT PLAN 103</b>	
Regulation <b>5 (2) (o)</b>	Document <b>2.9C</b>
Drawn NW Date JUNE 2018 Scale 1:1000 Reviewed JF	Drawing No. <b>WSP-70001979-GA-103</b>
Revisions F	





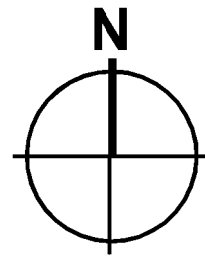
- KEY**
- ORDER LIMITS
  - FOOTWAY / CYCLEWAY
  - HIGHWAY
  - VERGE / GRASS
  - UNADOPTED HIGHWAY
  - UNADOPTED FOOTWAY / CYCLEWAY
  - UNADOPTED VERGE / GRASS
  - UNADOPTED FOOTPATH
  - TACTILE PAVING
- NOTE: LIMITS OF DEVIATION SHOWN ON THE WORKS PLANS (DOCUMENT SERIES 2.2) AND SET OUT IN ARTICLE 4 OF THE DEVELOPMENT CONSENT ORDER.



- K - 05/06/2018 - REDLINE UPDATED
- J - 29/05/2018 - REDLINE UPDATED
- I - 08/05/2018 - MINOR AMENDMENTS
- H - 20/03/2018 - MINOR AMENDMENTS
- G - 02/03/2018 - RED LINE UPDATED
- F - 22/02/2018 - CHANGE TO LAYOUT
- E - 21/02/2018 - MINOR AMENDMENT
- D - 20/02/2018 - AMENDED HOPPE ROUNDABOUT
- C - 15/02/2018 - AMENDED HOPPE ROUNDABOUT
- B - 12/12/2017 - BUS STOPS AMENDED
- A - FIRST ISSUE

<b>Revisions</b>	
Project <b>THE WEST MIDLANDS RAIL FREIGHT INTERCHANGE ORDER 201X</b>	
Drawing Status <b>SUBMISSION</b>	
Drawing Title <span style="float: right;">Drawing Size A1</span> <b>GENERAL ARRANGEMENT PLAN</b>	
<b>104</b>	
Regulation <b>5 (2) (c)</b>	Document <b>2.9D</b>
Drawn NW Date: JUNE 2018 Scale: 1:1000	Reviewed JF
Drawing No. <b>WSP-70001979-GA-104</b>	Rev. <b>K</b>





FOR CONTINUATION, SEE DOCUMENT 2.9F

NEW SOUTHBOUND LAY-BY  
NEW NORTHBOUND LAY-BY  
EXISTING ACCESS THROUGH CENTRAL RESERVATION CLOSED  
A449 STAFFORD ROAD

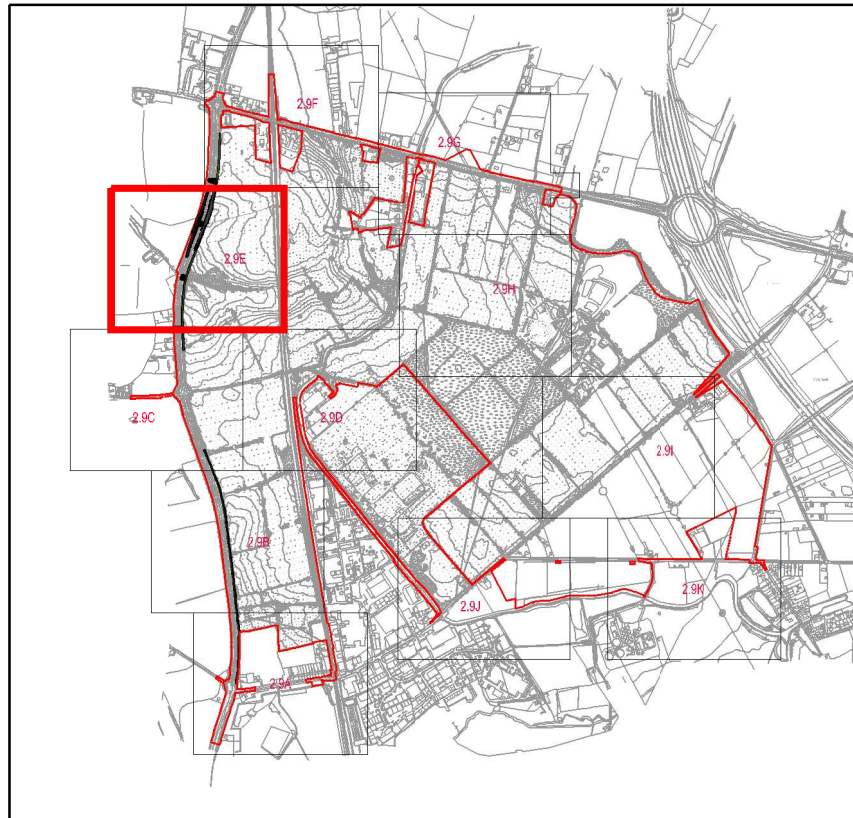
NEW FOOTWAY TO TIE BACK INTO EXISTING

EXISTING ACCESS THROUGH CENTRAL RESERVATION CLOSED

FOR CONTINUATION, SEE DOCUMENT 2.9C

- KEY
- ORDER LIMITS
  - HIGHWAY
  - FOOTWAY / CYCLEWAY
  - VERGE / GRASS
  - FOOTWAY

NOTE: LIMITS OF DEVIATION SHOWN ON THE WORKS PLANS (DOCUMENT SERIES 2.2) AND SET OUT IN ARTICLE 4 OF THE DEVELOPMENT CONSENT ORDER.



- E - 05/06/2018 - RED LINE UPDATED
- D - 08/05/2018 - MINOR AMENDMENTS
- C - 20/03/2018 - MINOR AMENDMENTS
- B - 02/03/2018 - RED LINE UPDATED
- A - FIRST ISSUE



Project  
**THE WEST MIDLANDS RAIL FREIGHT INTERCHANGE ORDER 201X**

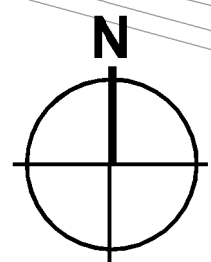
Drawing Status  
**SUBMISSION**

Drawing Title Drawing Size A1  
**GENERAL ARRANGEMENT PLAN 105**

Regulation Document  
**5 (2) (c) 2.9E**

Drawn NW	Date JUNE 2018	Scale 1:1000	Reviewed JF
Drawing No. WSP-70001979-GA-105			Rev. E

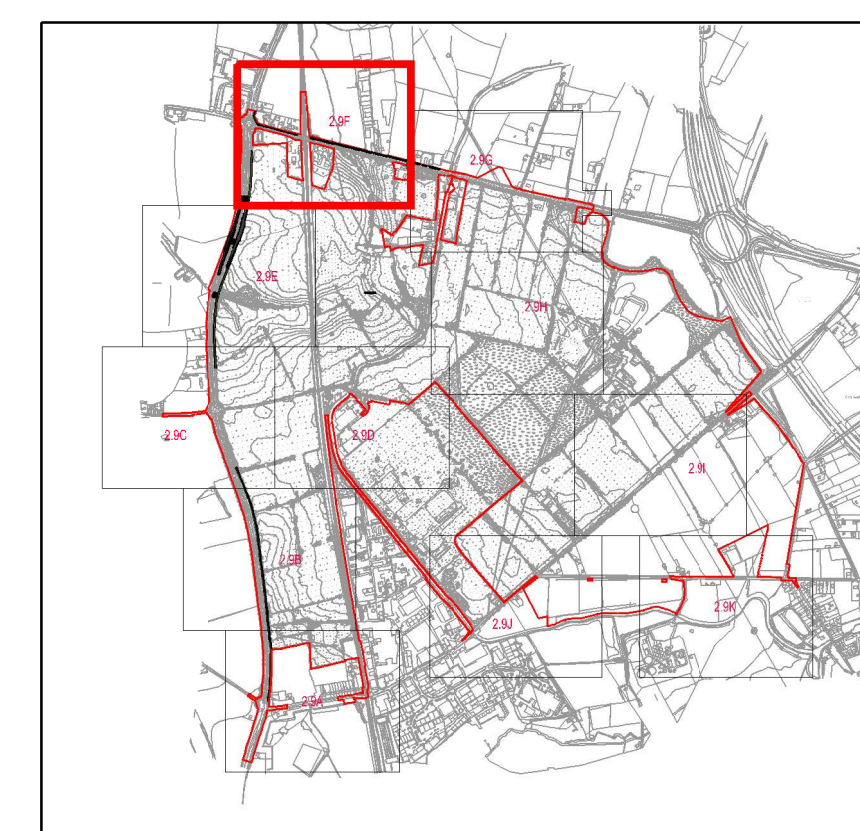
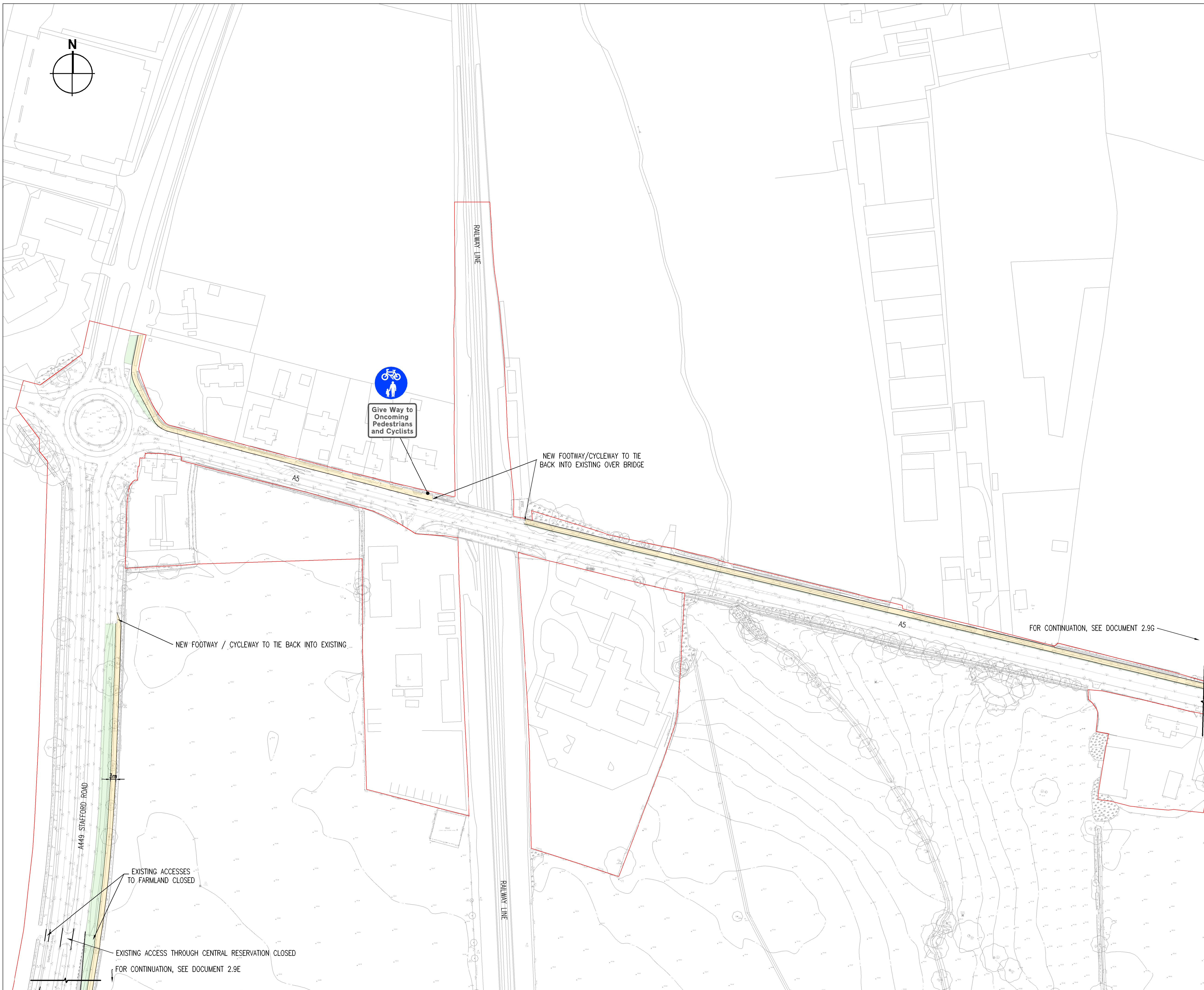




- KEY
- ORDER LIMITS
  - FOOTWAY / CYCLEWAY
  - VERGE / GRASS

NOTES:

LIMITS OF DEVIATION SHOWN ON THE WORKS PLANS (DOCUMENT SERIES 2.2) AND SET OUT IN ARTICLE 4 OF THE DEVELOPMENT CONSENT ORDER.



- F - 05/06/2018 - RED LINE UPDATED
- E - 08/05/2018 - MINOR AMENDMENTS
- D - 20/03/2018 - MINOR AMENDMENTS
- C - 02/03/2018 - RED LINE UPDATED
- B - 24/10/2017 - EXISTING ACCESS TO FARMLAND CLOSED
- A - CONSULTATION DRAFT ISSUE



Project  
THE WEST MIDLANDS RAIL FREIGHT INTERCHANGE ORDER 201X

Drawing Status  
SUBMISSION

Drawing Title Drawing Size A1  
GENERAL ARRANGEMENT PLAN  
106

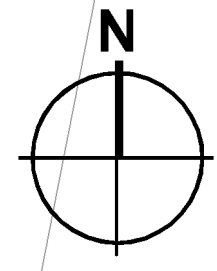
Regulation  
5 (2) (c)

Document  
2.9F

Drawn NW Date JUNE 2018 Scale 1:1000 Reviewed JF

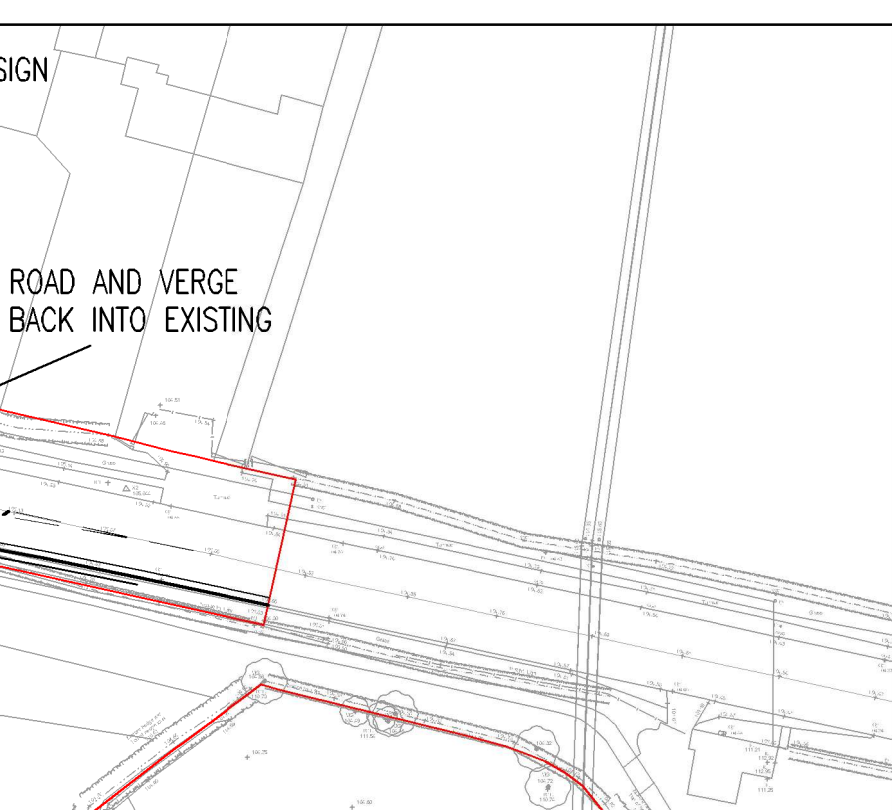
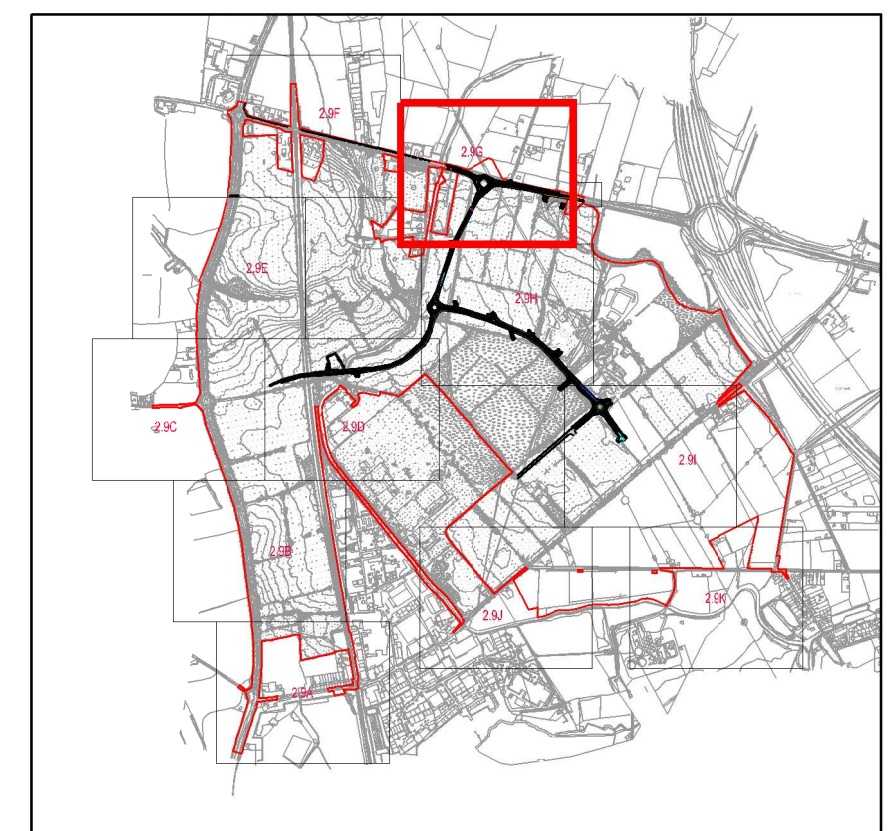
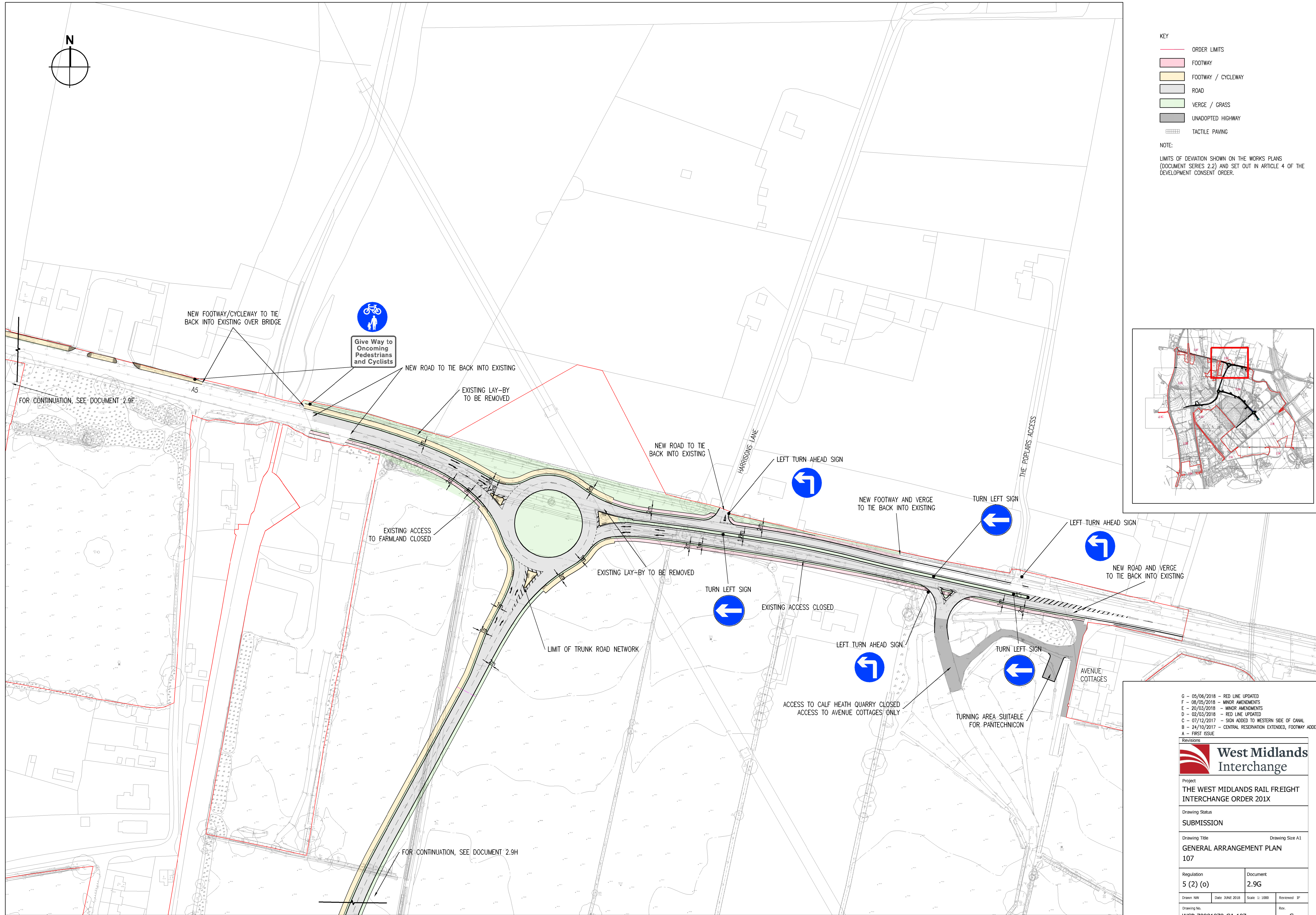
Drawing No. WSP-70001979-GA-106 Rev. F





- KEY
- ORDER LIMITS
  - FOOTWAY
  - FOOTWAY / CYCLEWAY
  - ROAD
  - VERGE / GRASS
  - UNADOPTED HIGHWAY
  - TACTILE PAVING

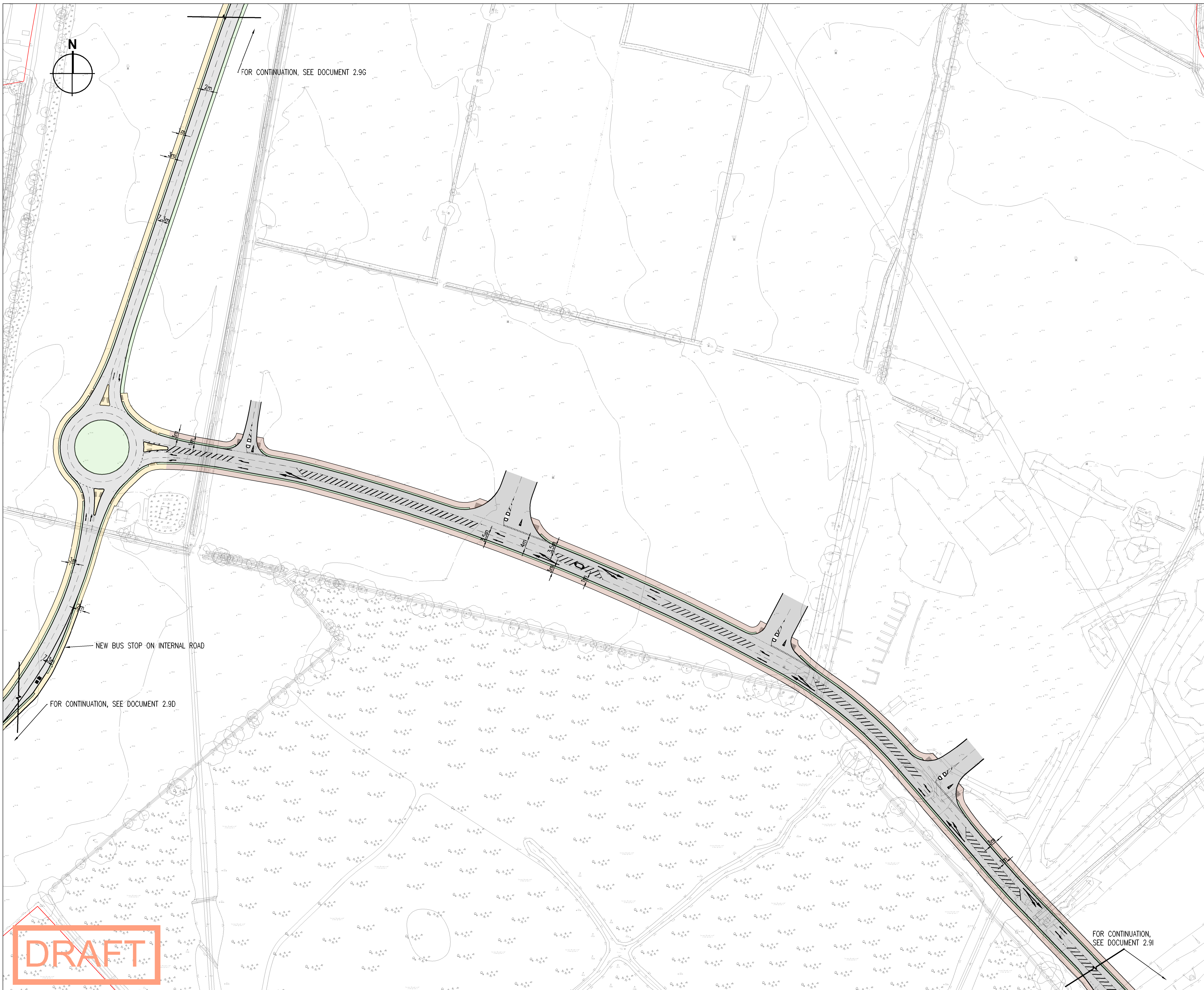
NOTE:  
LIMITS OF DEVIATION SHOWN ON THE WORKS PLANS (DOCUMENT SERIES 2.2) AND SET OUT IN ARTICLE 4 OF THE DEVELOPMENT CONSENT ORDER.



- G - 05/06/2018 - RED LINE UPDATED
- F - 08/05/2018 - MINOR AMENDMENTS
- E - 20/03/2018 - MINOR AMENDMENTS
- D - 02/03/2018 - RED LINE UPDATED
- C - 07/12/2017 - SIGN ADDED TO WESTERN SIDE OF CANAL
- B - 24/10/2017 - CENTRAL RESERVATION EXTENDED, FOOTWAY ADDED
- A - FIRST ISSUE

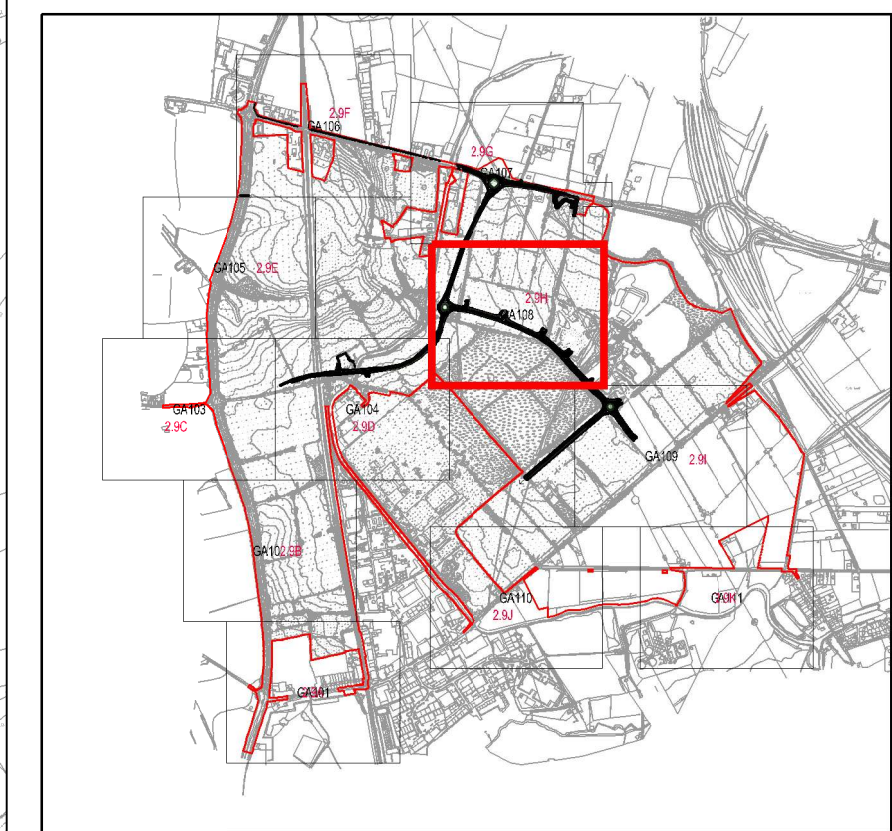
Project <b>THE WEST MIDLANDS RAIL FREIGHT INTERCHANGE ORDER 201X</b>	
Drawing Status <b>SUBMISSION</b>	
Drawing Title Drawing Size A1 <b>GENERAL ARRANGEMENT PLAN 107</b>	
Regulation <b>5 (2) (o)</b>	Document <b>2.9G</b>
Drawn NW Date: JUNE 2018 Scale: 1:1000 Reviewed JF	
Drawing No. <b>WSP-70001979-GA-107</b>	Rev. <b>G</b>





- KEY**
- ORDER LIMITS
  - FOOTWAY / CYCLEWAY
  - ROAD
  - VERGE / GRASS
  - UNADOPTED HIGHWAY
  - UNADOPTED FOOTWAY / CYCLEWAY
  - UNADOPTED VERGE / GRASS
  - ▨ TACTILE PAVING

**NOTE:**  
 LIMITS OF DEVIATION SHOWN ON THE WORKS PLANS (DOCUMENT SERIES 2.2) AND SET OUT IN ARTICLE 4 OF THE DEVELOPMENT CONSENT ORDER.  
 POSITION OF PLOT ACCESSES IS INDICATIVE

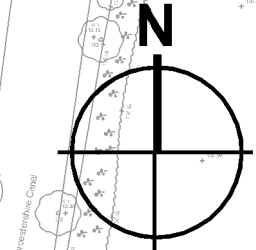


- F - 05/06/2018 - RED LINE UPDATED
- E - 08/05/2018 - MINOR AMENDMENTS
- D - 20/03/2018 - MINOR AMENDMENTS
- C - 02/03/2018 - RED LINE UPDATED
- B - 06/12/2017 - BUS STOPS AMENDED, CENTRAL ISLAND ADDED
- A - FIRST ISSUE

Project <b>THE WEST MIDLANDS RAIL FREIGHT INTERCHANGE ORDER 201X</b>	
Drawing Status <b>SUBMISSION</b>	
Drawing Title <span style="float: right;">Drawing Size A1</span> <b>GENERAL ARRANGEMENT PLAN</b> <b>108</b>	
Regulation <b>5 (2) (c)</b>	Document <b>2.9H</b>
Drawn NW Date: MAY 2018 Scale: 1:1000 Drawing No. <b>WSP-70001979-GA-108</b>	Reviewed JF Rev. <b>F</b>

DRAFT

FOR CONTINUATION, SEE DOCUMENT 2.9G

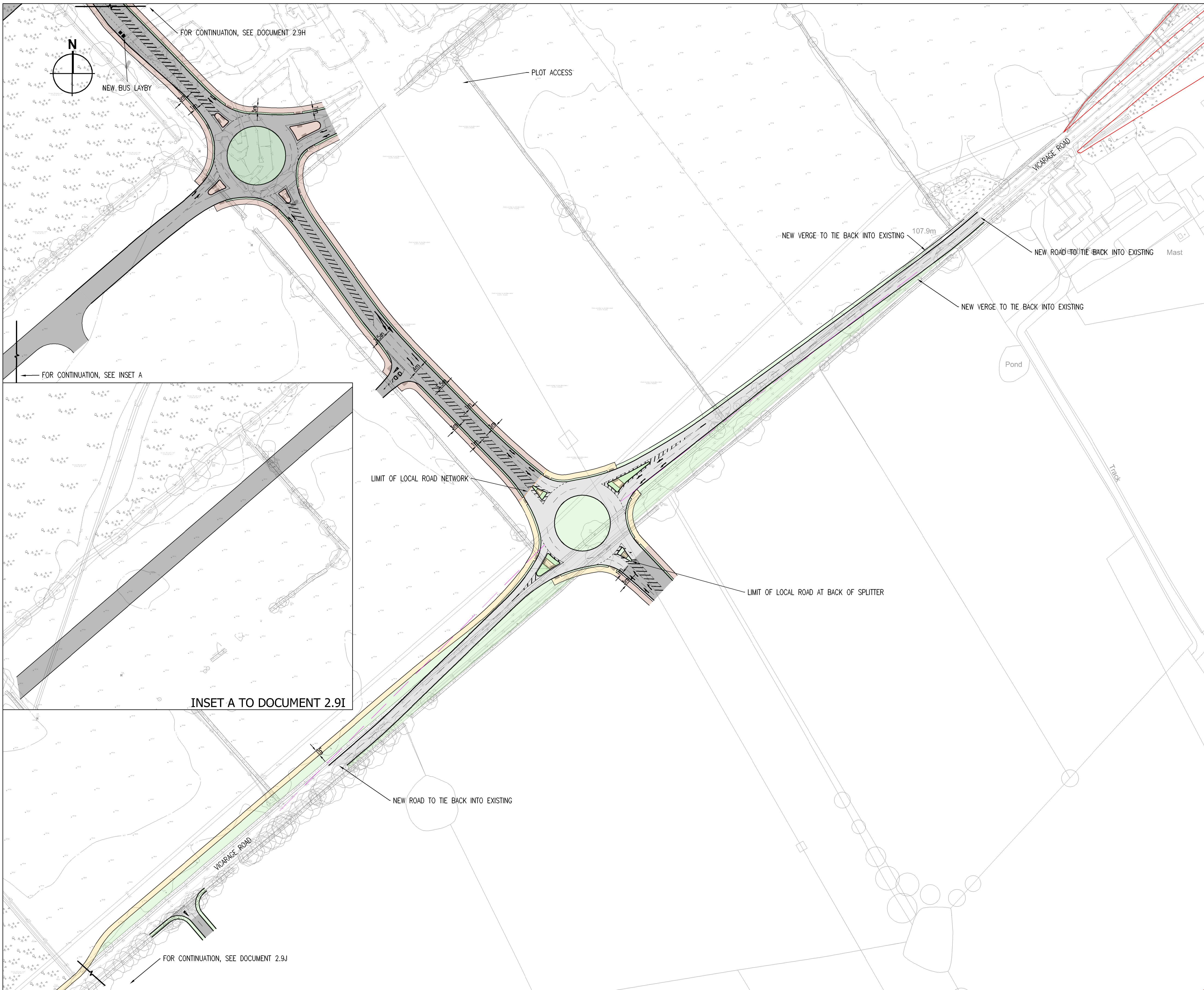


FOR CONTINUATION, SEE DOCUMENT 2.9I

FOR CONTINUATION, SEE DOCUMENT 2.9D

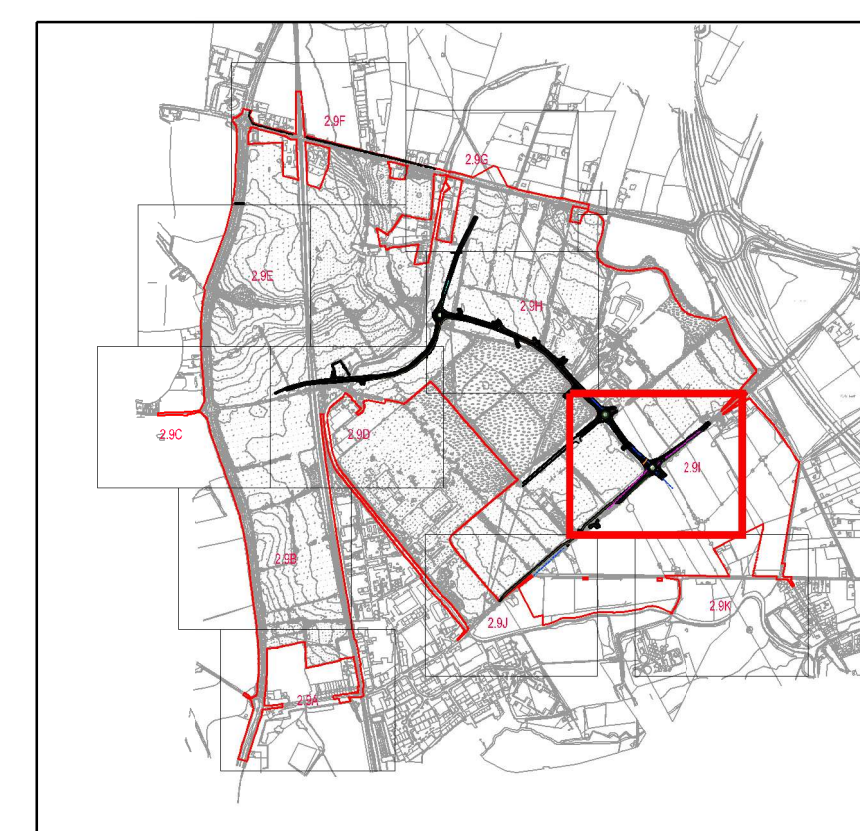
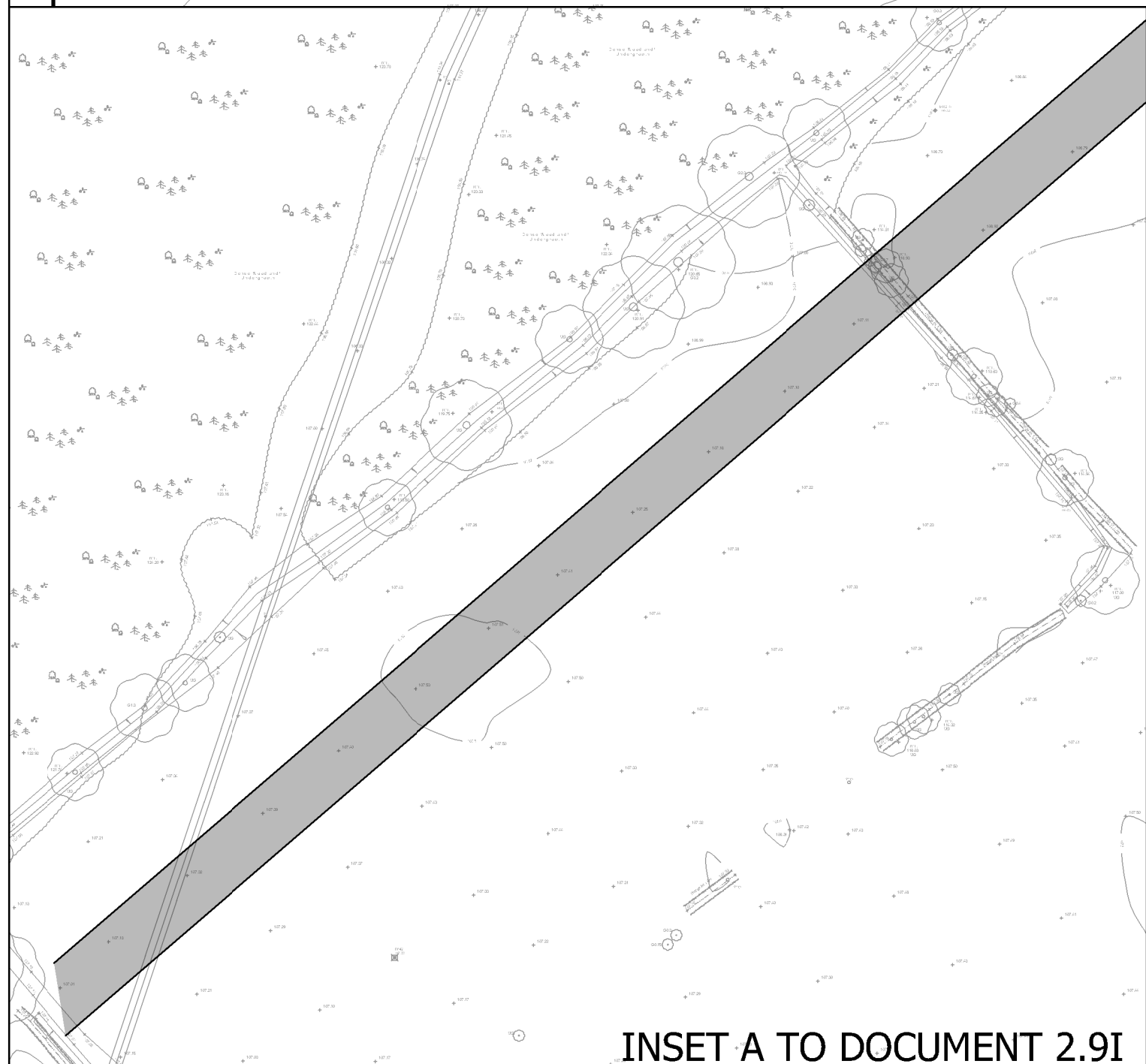
NEW BUS STOP ON INTERNAL ROAD





- KEY**
- ORDER LIMITS
  - FOOTWAY / CYCLEWAY
  - ROAD
  - VERGE / GRASS
  - UNADOPTED FOOTWAY / CYCLEWAY
  - UNADOPTED HIGHWAY
  - TACTILE PAVING

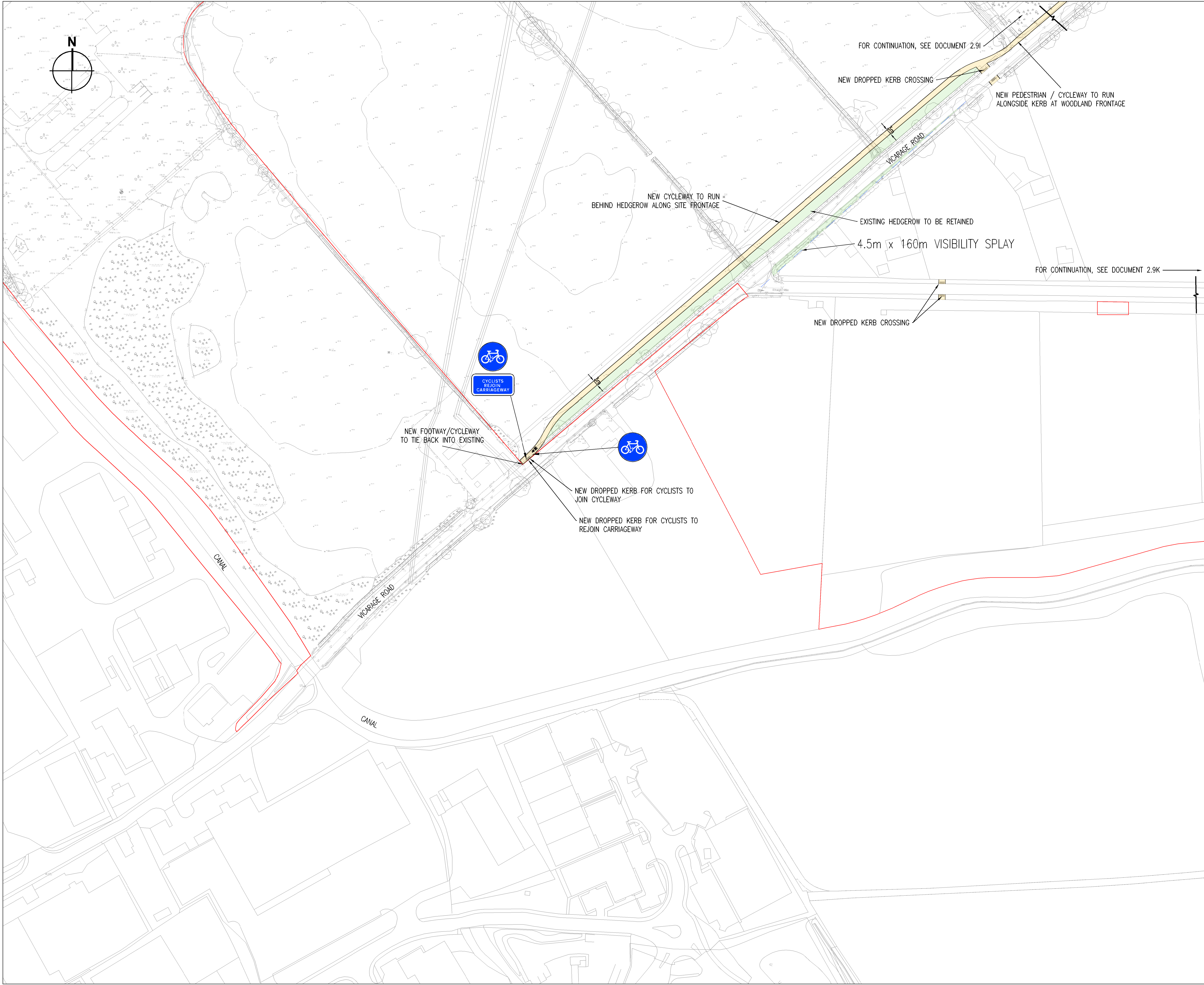
NOTE:  
LIMITS OF DEVIATION SHOWN ON THE WORKS PLANS  
(DOCUMENT SERIES 2.2) AND SET OUT IN ARTICLE 4 OF THE DEVELOPMENT  
CONSENT ORDER.  
POSITION OF PLOT ACCESSSES IS INDICATIVE



- F - 05/06/2018 - RED LINE UPDATED
- E - 08/05/2018 - MINOR AMENDMENTS
- D - 20/03/2018 - MINOR AMENDMENTS
- C - 02/03/2018 - RED LINE UPDATED
- B - 12/12/2017 - ACCESS TO SOUTH UPDATED
- A - FIRST ISSUE

Project <b>THE WEST MIDLANDS RAIL FREIGHT INTERCHANGE ORDER 201X</b>	
Drawing Status <b>SUBMISSION</b>	
Drawing Title Drawing Size A1 <b>GENERAL ARRANGEMENT PLAN 109 AND INSET A</b>	
Regulation <b>5 (2) (o)</b>	Document <b>2.9I</b>
Drawn NW Date: JUNE 2018 Scale 1:1000	Reviewed JF
Drawing No. <b>WSP-70001979-GA-109</b>	Rev. <b>F</b>



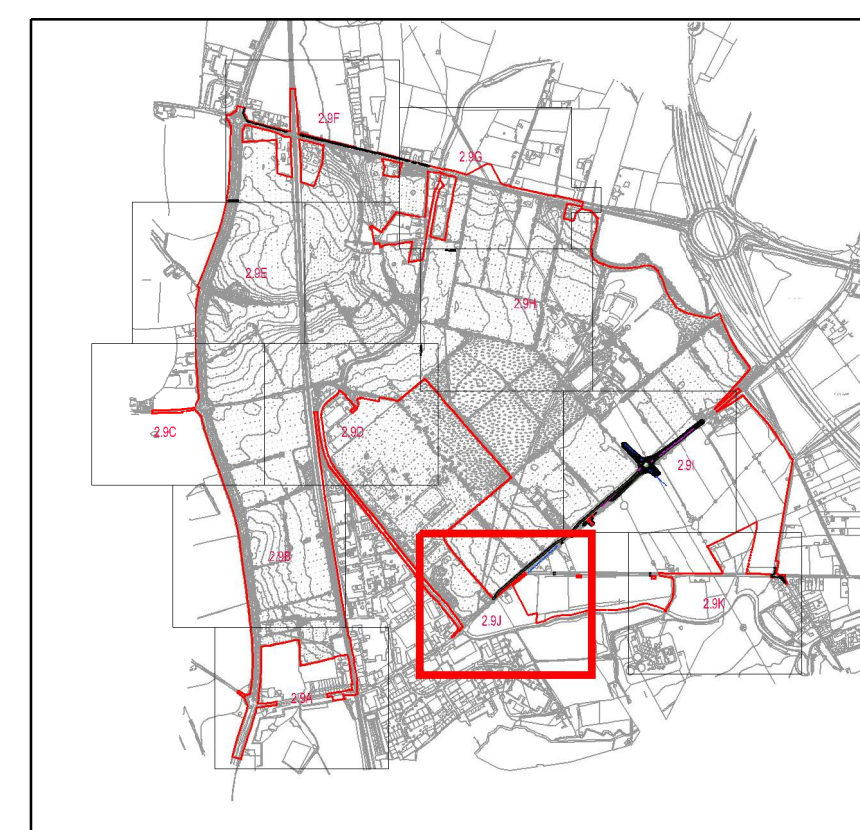


**KEY**

- ORDER LIMITS
- CYCLEWAY / FOOTWAY
- VERGE / GRASS
- TACTILE PAVING
- VISIBILITY SPLAY

**NOTES:**

LIMITS OF DEVIATION SHOWN ON THE WORKS PLANS (DOCUMENT SERIES 2.2) AND SET OUT IN ARTICLE 4 OF THE DEVELOPMENT CONSENT ORDER.



- G - 05/06/2018 - RED LINE UPDATED
- F - 08/05/2018 - MINOR AMENDMENTS
- E - 20/03/2018 - MINOR AMENDMENTS
- D - 02/03/2018 - RED LINE UPDATED
- C - 06/12/2017 - END MARKINGS ADDED TO CYCLE LANE  
DROPPED KERB REALIGNED
- B - 24/10/2017 - VISIBILITY SPLAY ADDED  
DROPPED KERB REALIGNED
- A - FIRST ISSUE

**West Midlands Interchange**

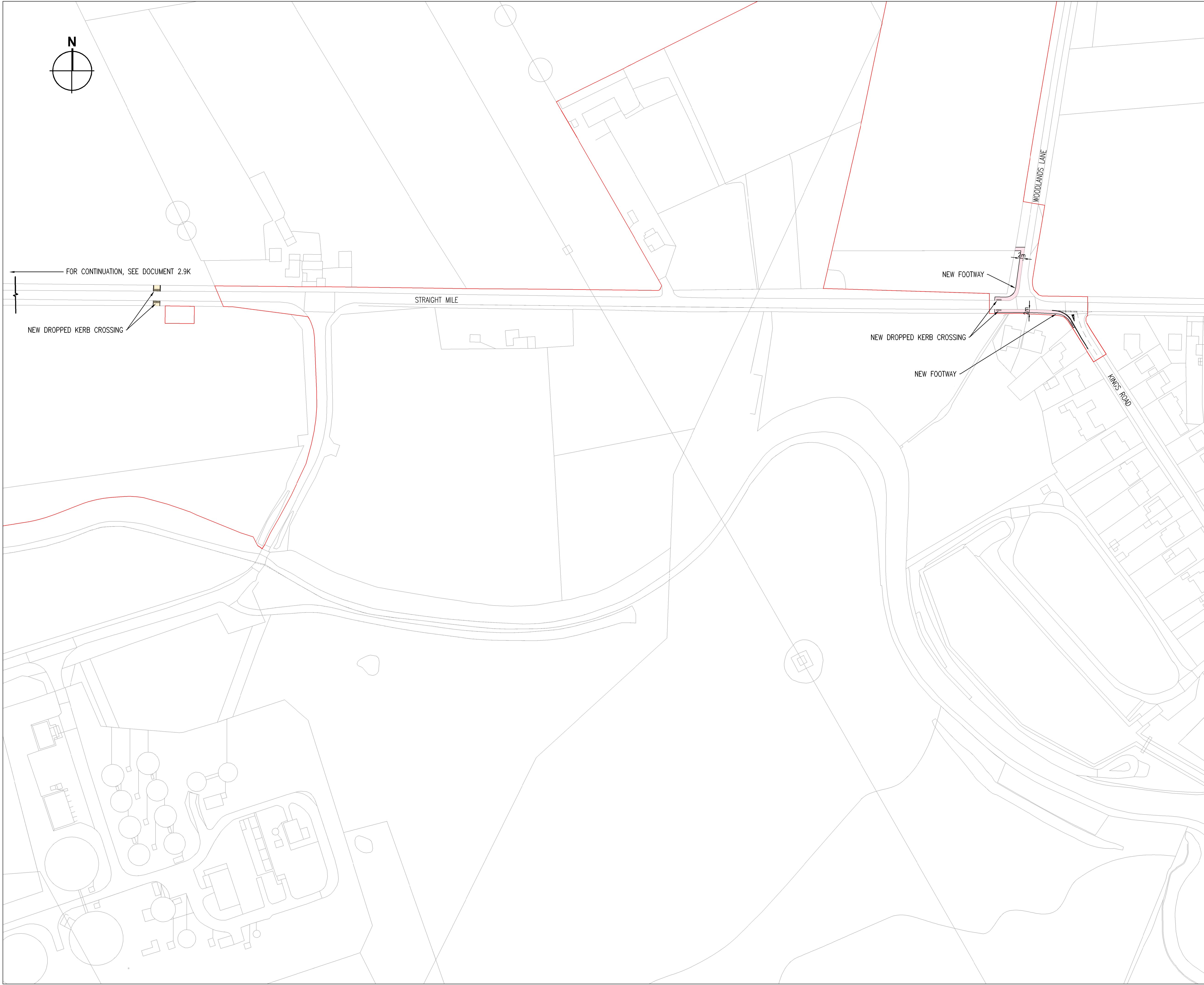
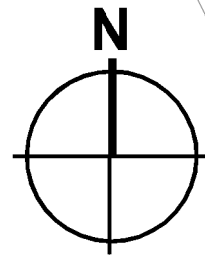
Project  
**THE WEST MIDLANDS RAIL FREIGHT INTERCHANGE ORDER 201X**

Drawing Status  
**SUBMISSION**

Drawing Title Drawing Size A1  
**GENERAL ARRANGEMENT PLAN 110**

Regulation <b>5 (2) (o)</b>	Document <b>2.9J</b>
Drawn NW Date: JUNE 2018 Scale: 1:1000	Reviewed JF
Drawing No. <b>WSP-70001979-GA-110</b>	Rev. <b>G</b>



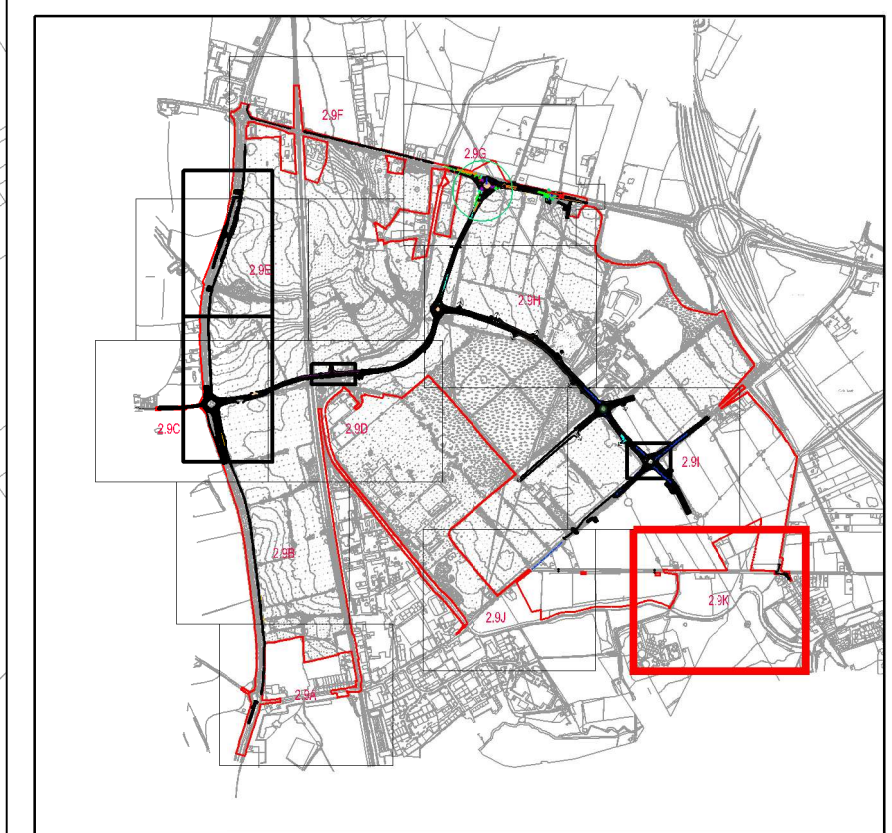


**KEY**

- ORDER LIMITS
- CYCLEWAY / FOOTWAY
- TACTILE PAVING

**NOTE:**

LIMITS OF DEVIATION SHOWN ON THE WORKS PLANS (DOCUMENT SERIES 2.2) AND SET OUT IN ARTICLE 4 OF THE DEVELOPMENT CONSENT ORDER.



- F - 05/06/2018 - RED LINE UPDATED
- E - 08/05/2018 - MINOR AMENDMENTS
- D - 20/03/2018 - MINOR AMENDMENTS
- C - 02/03/2018 - RED LINE UPDATED
- B - 12/12/2017 - DROPPED KERB REALIGNED
- A - FIRST ISSUE

Project <b>THE WEST MIDLANDS RAIL FREIGHT INTERCHANGE ORDER 201X</b>	
Drawing Status <b>SUBMISSION</b>	
Drawing Title <span style="float: right;">Drawing Size A1</span> <b>GENERAL ARRANGEMENT PLAN</b> 111	
Regulation <b>5 (2) (o)</b>	Document <b>2.9K</b>
Drawn NW	Date JUNE 2018
Scale 1:1000	Reviewed JF
Drawing No. <b>WSP-70001979-GA-111</b>	Rev. <b>F</b>